

6

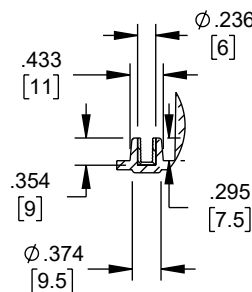
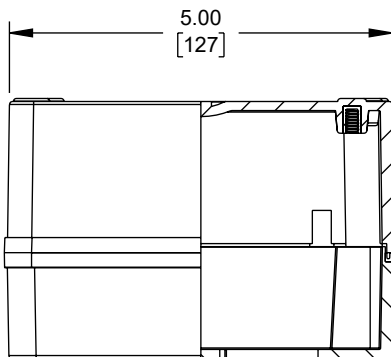
5

4

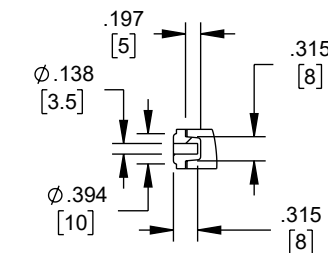
3

2

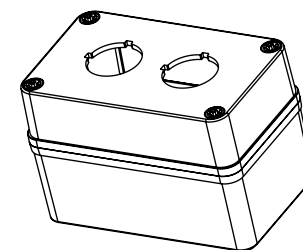
1



SECTION C-C



SECTION D-D



F

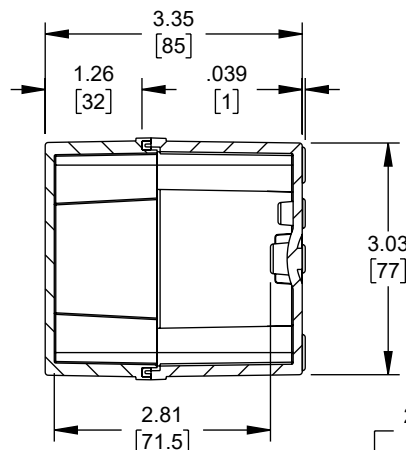
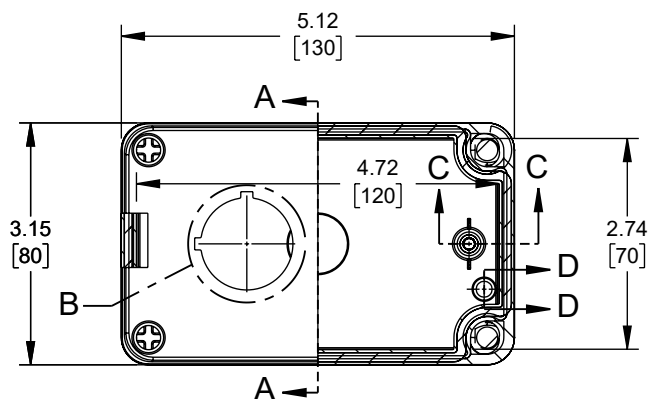
E

F

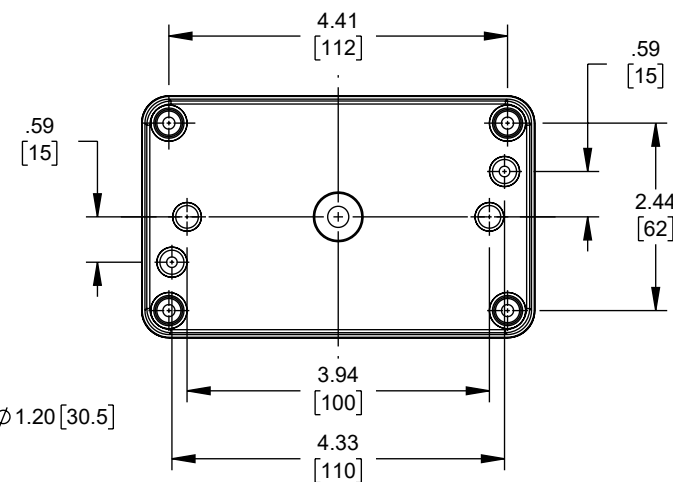
E

D

D



SECTION A-A

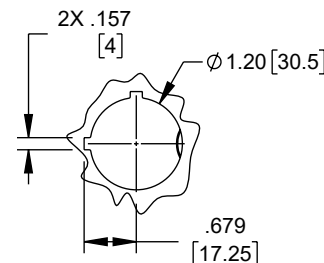
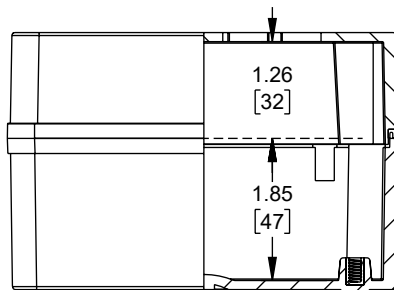


C

C

B

B

DETAIL B  
2 PLACES

## NOTES:

1. PACKAGING: SHALL BE PACKAGED AS PER L-COM SPEC PKG-00070
2. ALL DIMENSIONS FOR REFERENCE ONLY.

## REGULATORY COMPLIANCE:

EU RoHS DIRECTIVE (MOST RECENTLY RELEASED VERSION).

THE INFORMATION CONTAINED IN THIS DRAWING IS THE SOLE PROPERTY OF INFINITE ELECTRONICS, INC. ANY REPRODUCTION IN PART OR WHOLE WITHOUT THE WRITTEN PERMISSION OF INFINITE ELECTRONICS, INC. IS PROHIBITED. THESE COMMODITIES, TECHNOLOGY OR SOFTWARE WERE EXPORTED FROM THE UNITED STATES IN ACCORDANCE WITH THE EXPORT ADMINISTRATION REGULATIONS. DIVERSION CONTRARY TO U.S. LAW PROHIBITED.

6

5

4

3

2

1

REVISION					
ZONE	REV	DESCRIPTION	DATE	CHANGED BY	APPROVED
	A	INITIAL RELEASE	12/07/2023	KGLEBOVA	THOUGHTON

UNLESS OTHERWISE SPECIFIED LEADING DIMENSIONS ARE INCHES DIMENSIONS IN [ ] ARE MILLIMETERS		<div>L-com®</div> <div>an INFINIT® brand</div> <div>Website: <a href="http://www.L-com.com">www.L-com.com</a></div> <div>Phone: 1.800.341.5266   1.978.682.6936</div>		<div></div> <div>INTERPRET ALL DIMENSIONS AND TOLERANCES PER ASME Y14.5</div>	
TOLERANCES: <div>X = ±.2 [5] .XX = ±.02 [0.5] .XXX = ±.005 [0.13]</div> <div>FRACTIONS ± 1/32 ANGLES ± 1°</div>				SCALE NONE	SHEET 1 OF 1
CABLE LENGTH TOLERANCES: ≤12 [305] = +1 [25] / -0 >12 [305] ≤ 60 [1524] = +2 [51] / -0 >60 [1524] ≤ 120 [3048] = +4 [102] / -0 >120 [3048] ≤ 300 [7620] = +6 [152] / -0 >300 [7620] = +5% / -0		DESCRIPTION <div>PUSHBUTTON ENCLOSURE, 2 HOLE, 30.5MM, POLYESTER, GRAY</div>			
ALL DIMENSIONS ARE FOR REFERENCE ONLY AND SUBJECT TO CHANGE WITHOUT NOTICE UN-DIMENSIONED/NON-CRITICAL FEATURES MAY VARY IN SIZE AND LOCATION COLORS MAY VARY					
SIZE	CAGE CODE	DRAWN BY	ITEM NO.		REV
A	43321	KGLEBOVA	LC-PCG-0813-1-A2		A

A

A